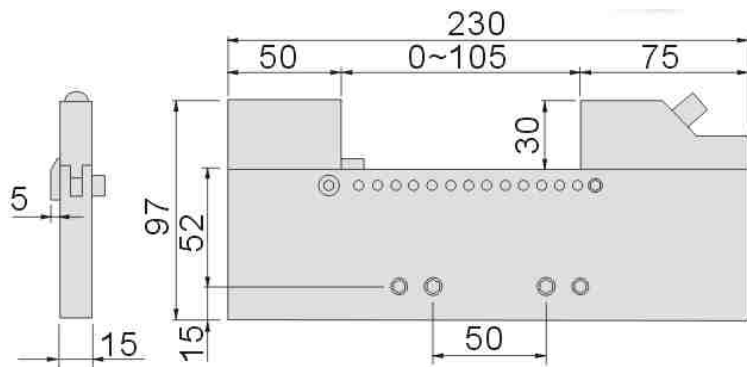
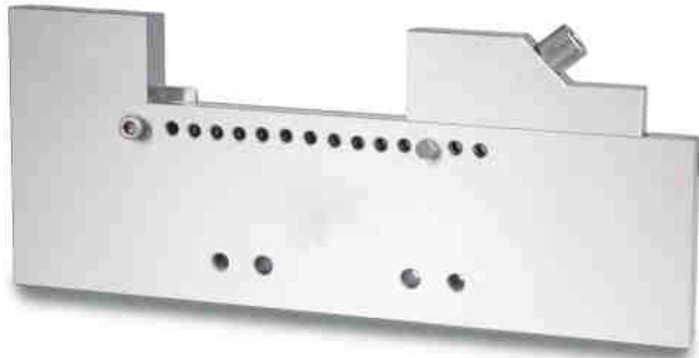


**STAINLESS STEEL PRECISION VISE FOR EDM – WST100**



Dimensions (mm)				
Part Number	Jaw opening	Jaw width	Jaw height	Weight Kg
1002/35/100	0-105	15	30	2

Use : EDM wire cutting

Features :

- High quality stainless steel
- Cryogenic hardening, hardness : 45-55 HRC
- Parallelism: 0.003/100 mm
- Squareness : 0.005/100 mm
- Can be installed with 3 axis leveling base ref 1002/34/50



*WST vise installed on 3 axis leveling base*